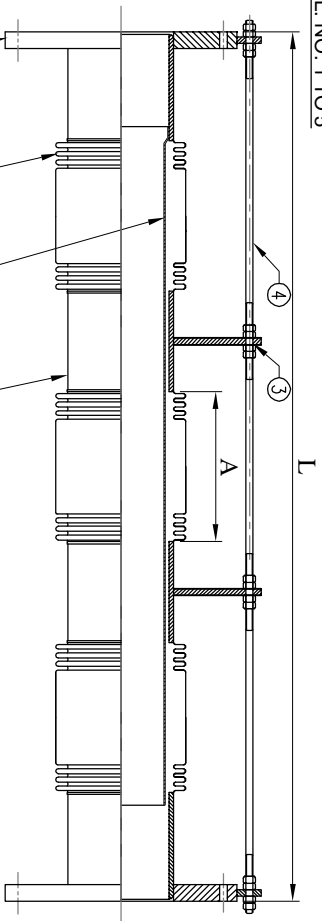
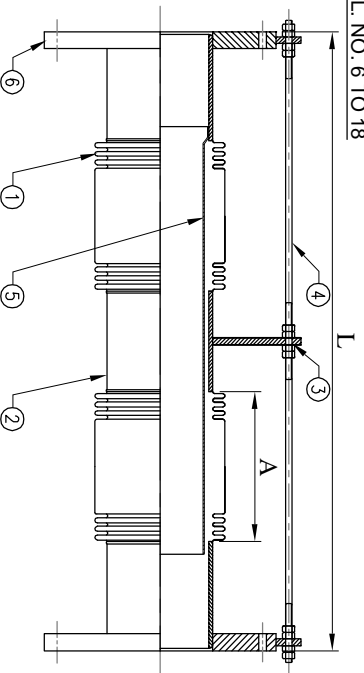


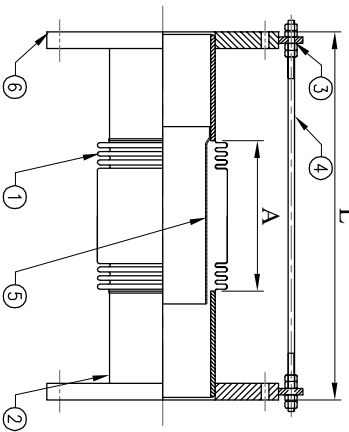
SL. NO. 1 TO 5



SL. NO. 6 TO 18



SL. NO. 19 & 20



MODEL - SSEJ-300F-SG
[THREE BELLOW TYPE]



MODEL - SSEJ-300F-SG
[TWO BELLOW TYPE]



MODEL - SSEJ-300F-SG
[SINGLE BELLOW TYPE]
ABOVE PICTURES ARE FOR ILLUSTRATION PURPOSE ONLY

SL. NO.	NOMINAL BORE	TOTAL LENGTH (L)	BELLOWS	
	mm	(+/-5mm)	CORRS	A
1	15	660	22+22+22	115
2	20	660	22+22+22	115
3	25	660	22+22+22	115
4	32	760	22+22+22	150
5	40	760	20+20+20	146
6	50	700	26+26	190
7	65	540	14+14	140
8	80	540	14+14	140
9	100	600	14+14	170
10	125	600	14+14	170
11	150	600	14+14	170
12	200	680	12+12	168
13	250	680	12+12	168
14	300	680	12+12	168
15	350	680	8+8	186
16	400	680	8+8	186
17	450	680	8+8	186
18	500	680	8+8	186
19	550	700	10	350
20	600	700	10	350

■ CONSTRUCTION

ITEM	PARTS	MATERIAL
1	BELLOWS	SST304 (2 PLY)
2	TUBE	CARBON STEEL
3	GUSSET	CARBON STEEL
4	TIE RODS	CARBON STEEL
5	INNER SLEEVE	SST304
6	FLANGE	CARBON STEEL

OTHER MATERIALS/FINISH AVAILABLE ON REQUEST

WORKING PRESSURE : 25 bar
 WORKING TEMPERATURE : -50°C to +450°C
 AXIAL MOVEMENT : + / -50mm

MODEL - SSEJ-300F-SG

FLANGED ENDS - ANSI ASA 300 OR BS4504 PN 25

STANDARD FINISH
 FLANGES / GUSSETS : GALVO PAINT
 CONTROL ROD : ZINC PLATED
 & HARDWARE

WARNING : - Control units must be used to protect this part from excessive movement if piping is not properly anchored.